

# EYF2026 Bar Stool



## Key Features

- Seat cushion backrest supported by a mirror polished stainless steel spine with optional etched detailing
- Mirror polished stainless steel rotating plinth and footrest with stitched leather overlay
- Solid teak footrest detail
- Upholstered seat and backrest

## Specification

### NJF REF: EYF2026

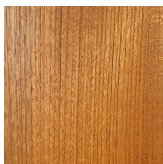
Width: 439mm | Height: 1073mm | Depth: 496mm | Fabric qty: 1.5m

Seat height: 750mm | Seat depth: 335mm

## Materials



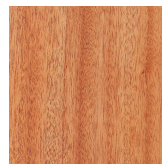
High-Gloss  
Teak



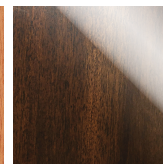
Oiled Teak



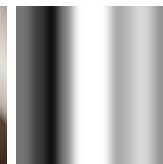
Beach Club  
Teak



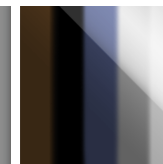
Oiled  
Mahogany



High-Gloss  
Stained  
Mahogany



Mirror-  
Polished  
Stainless  
Steel



Custom  
Colour  
Lacquer



Leather

