

EYF6004 Coffee Table



Key Features

- Aluminium honeycomb internal substrate
- Mirror polished stainless steel inlay with vertical spine details
- Angular stainless steel legs
- Teak top surrounding and inset stone top

Specification

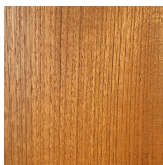
NJF REF: EYF6004

Width: 1227mm | Height: 405mm | Depth: 1227mm

Materials



Oiled
Mahogany



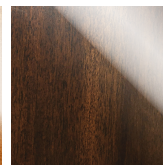
Oiled Teak



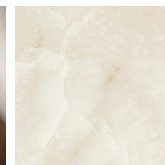
Beach Club
Teak



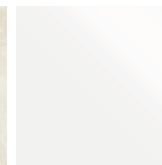
High-Gloss
Teak



High-Gloss
Stained
Mahogany



Bianco
Assoluto



High-Gloss
Snow White
Lacquer



Mirror-
Polished
Stainless
Steel

